

*CCMEP  
Comprehensive Case  
Management &  
Employment Program*



# CCMEP

Comprehensive Case Management &  
Employment Program

What is  
the simple  
definition?

CCMEP is a workforce program that works with youth ages 14-24 to overcome barriers related to employment or education.

There are 14 program elements and multiple activities that, not only identify, but help mitigate barriers so youth can reach a level of self-sufficiency.

# *Barriers to Employment*

- *Dropped out/withdrew from school*
  - *Basic Skills Deficient*
    - *Offender*
    - *Homeless*
    - *Foster care*
  - *Documented disability*
  - *Pregnant/parenting*

# Let's review "Johnny's Journey" to better understand CCMEP

As we review services and activities, consider those that might help Johnny. We will review together as we go.

Johnny is a 16 year old HS student who is on an IEP for ADHD. He lives in a one parent household and has never had a job before. He doesn't know what he wants to do after graduation but he has an interest in the automotive industry. He is on-track to graduate but will need several immediate needs addressed to prepare him for success.

Johnny will need a job, drivers license, and a car.

# Workforce Activities

1. Paid Work-experience

2. OJT/Apprenticeship

3. Unsubsidized employment



- Tutoring services & school dropout prevention strategies



I hate algebra!

- Private tutors
- Learning centers
- Web based programs

# Job-readiness training

1. Employer expectations

2. Resume

3. Interviewing



# Career Counseling



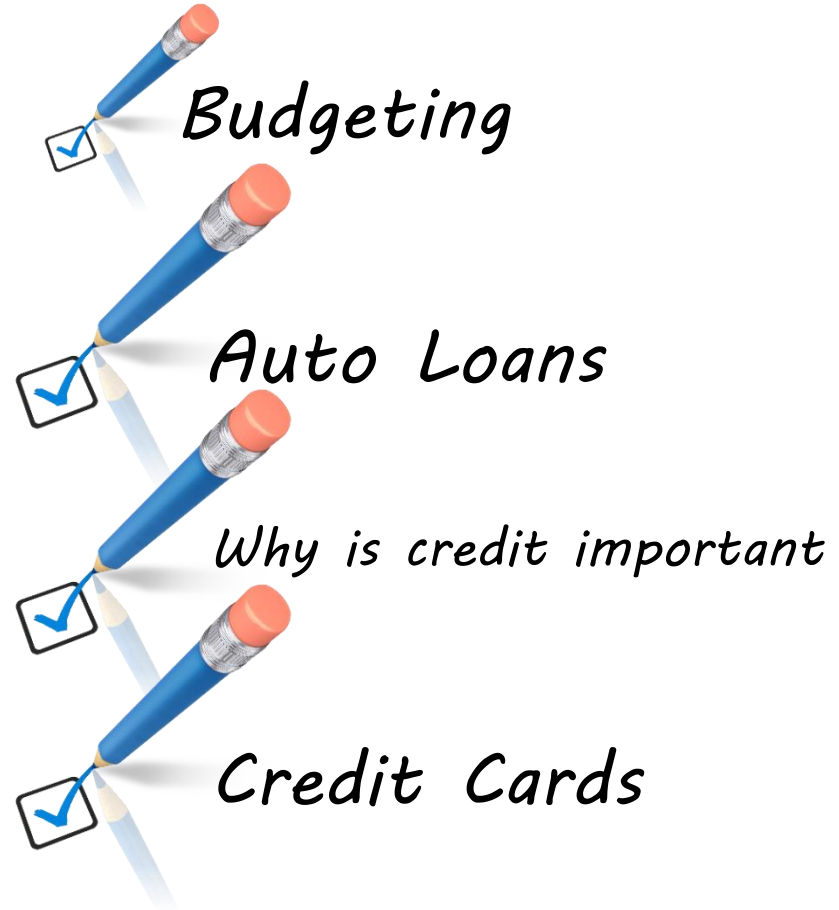
When I Grow Up I wanna be \_\_\_\_\_.



# Financial Literacy Training



*Available online, group & individual training*



*Budgeting*

*Auto Loans*

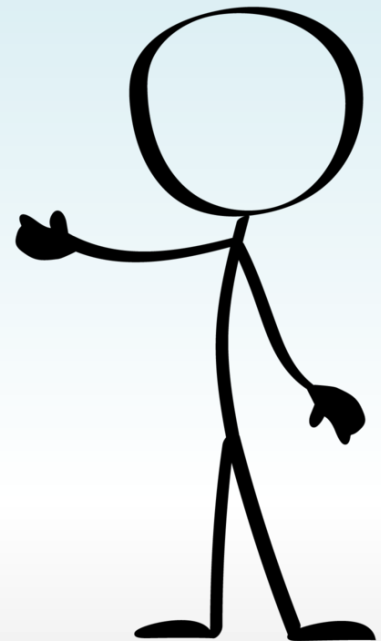
*Why is credit important*

*Credit Cards*

# Supportive Services

Supportive services are used to allow youth to participate in educational or workforce activities.

Supportive services are also used when it supports one of the (4) TANF Purpose



# Supportive Services at a Glance



## School Supplies/Tools

1. Laptop
2. Internet
3. School related uniforms
4. Basic school supplies

## Utility Bills:

This includes bills that are not in the youths name as long as youth resides in and counted as a HH member.

## Housing:

- First/last months rent on new housing
- Can assist for 4 months, sometimes longer
- Temporary housing



# *Supportive Services at a Glance*



## *Baby Furniture:*

*Defined as reasonable  
& necessary*

## *Car Repairs:*

*Defined as reasonable  
& necessary*

## *Baby Clothes:*

*Defined as  
reasonable &  
necessary*



# Supportive Services at a Glance



Cannot purchase auto but may be able to assist with down payment or a portion of actual cost.

- ✓ Mileage Reimbursement
- ✓ Gas Cards
- ✓ Auto Repairs
- ✓ Drivers Ed
- ✓ Drivers Permit/License

# *Supportive Services at a Glance*

*WOW! I got  
furniture for my  
new apartment!*



*Defined as reasonable and necessary*

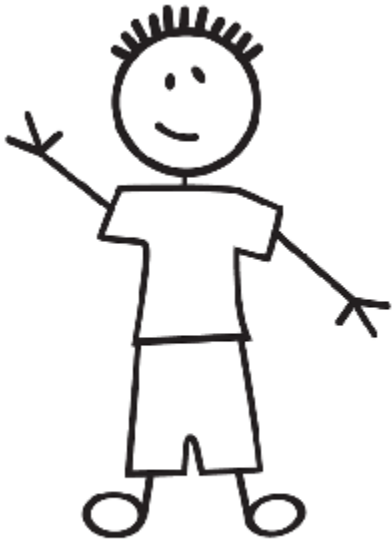


# Supportive Services at a Glance

✓ Childcare Assistance



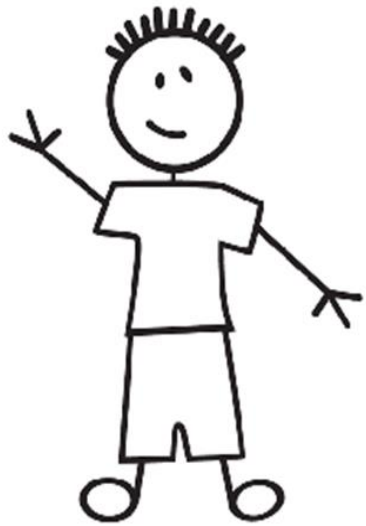
# Meet Johnny



*What services would help Johnny  
with his goals?*



What services would help Johnny with his goals?



Childbirth  
Classes

INCORRECT

Entrepreneurship  
Training

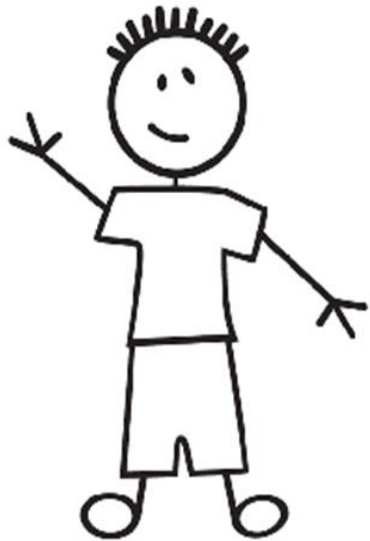
INCORRECT

Job-readiness  
Training

CORRECT!



What services would help Johnny with his goals?



*Work-  
experience*

**CORRECT!**

*Financial Literacy  
Training*

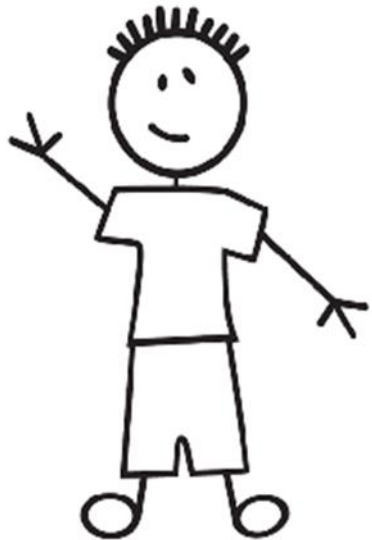
**CORRECT!**

*Childcare  
Assistance*

**INCORRECT!**



*What services would help Johnny with his goals?*



*Career  
Counseling*

**CORRECT!**

*Job  
Shadowing*

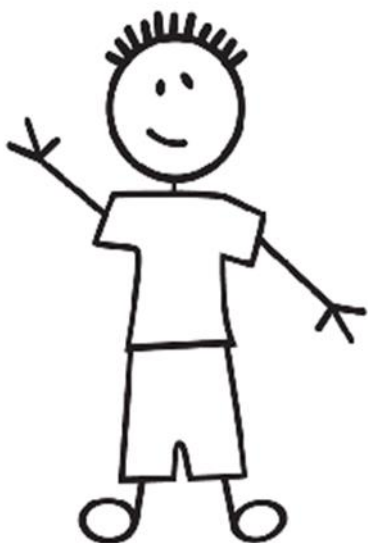
**CORRECT!**

*Tutoring/  
Dropout  
Prevention*

**CORRECT!**



What services would help Johnny with his goals?



*Post-secondary  
preparation*

**CORRECT!**

*Supportive  
Services*

**CORRECT!**



# Which supportive service is allowable?



*Medical Reimbursement*

Incorrect



*Baby Furniture/Clothes*

Incorrect



*Work Boots/Clothes*

Correct



Let's review ALL services that may help Johnny reach his goals

Job-readiness  
Training

Work-  
Experience

Financial Literacy  
Training

Work  
Boots/Clothes

Career  
Counseling

Post-secondary  
preparation

Tutoring

Utilities

Transportation

Disability  
Services

Leadership  
Development

Drivers  
Permit/License

NEXT SLIDE

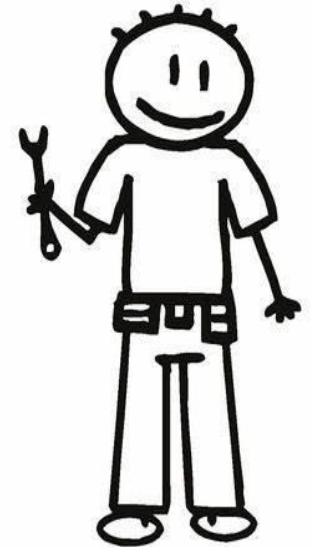
# Johnny's Outcome:

Johnny was able to stay on track to graduate. He learned how to create a resume and gained interview skills that would prepare him for future jobs.

He participated in a work-experience at a local automotive dealership and was able to acquire new work boots and uniform.

Through completion of drivers ed, Johnny was also able to obtain his drivers license.

While participating in his work experience, Johnny was able to utilize gas cards to help him get to and from the worksite.



NEXT SLIDE

*Spread the news! Share our mobile app!*



*Refer Youth!*

NEXT SLIDE



Make a referral!  
Use our app, email or call



Brooke Snyder  
[bsnyder@jobworksinc.org](mailto:bsnyder@jobworksinc.org)  
(937) 472-2515

Katie Combs  
[kcombs@jobworksinc.org](mailto:kcombs@jobworksinc.org)  
(940) 782-7592

